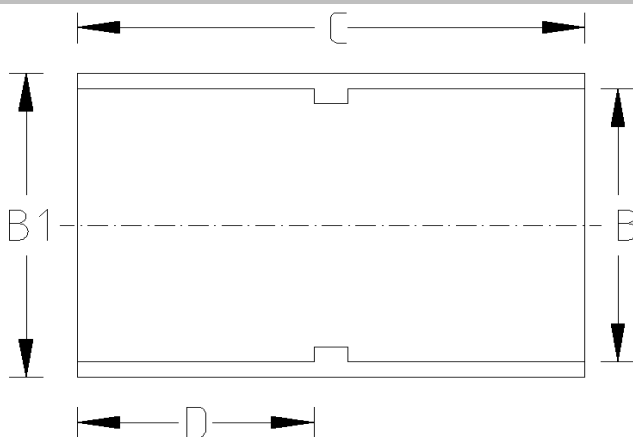


SOCKET (Metric)



DATA TABLE

SIZE	B (mm)	B1 (mm)	C (mm)	D (mm)	WEIGHT (g)
12mm	12.0	16.0	25.0	12.0	10.0
16mm	16.0	21.0	31.0	14.0	15.0
20mm	20.0	25.0	36.0	17.0	15.0
25mm	25.0	30.8	41.0	19.5	23.0
32mm	32.0	38.3	48.0	23.0	36.0
40mm	40.0	47.9	60.0	28.5	60.0
50mm	50.0	58.3	70.0	33.5	85.0
63mm	63.0	72.9	83.0	40.0	145.0
75mm	75.0	87.6	90.0	44.0	222.0
90mm	90.0	105.4	106.0	51.0	353.0
110mm	110.0	126.4	126.0	61.0	605.0
125mm	125.0	142.4	144.0	69.0	605.0
140mm	140.0	159.0	161.0	46.5	605.0
160mm	160.0	180.6	180.0	86.0	1000.0
200mm	200.0	225.6	222.0	107.0	1400.0
225mm	225.0	245.0	252.0	119.0	2600.0
250mm	250.0	274.6	269.0	131.0	3800.0
315mm	315.0	343.0	344.0	147.0	4600.0

SPECS

- WRAS Approved
- Maximum Working Pressure - 10bar
- Operation Temperature 0 - 60°C

RELATED PRODUCTS

- 51125 - 125ml UNI100 Griffon Cement w.brush
- 51023 - 500ml UNI100 Griffon Cement w. brush
- 51025 - 500ml UNI100 Griffon Cement - Tin
- 51012 - 500ml Tangit Cement - Tin
- 51024 - 500ml WDF-05 Blue Fast Setting Cement
- 51021 - 500ml PVC Cleaner
- 2817 - 50mm roll Emery Cloth
- 40911 - Centre Pull Paper Towel

Temperature Derating Table

Temperature C	Pressure rating bar
20	10.0
30	8.0
40	5.8
50	3.9
60	2.2

Plastic Pipe Shop Ltd

Unit 1, Craig Leith Road
Broadleys Business Park,
Stirling, FK7 7XQ
Web: www.plasticpipeshop.co.uk
Email: sales@plasticpipeshop.co.uk
Tel: 01786 472 850

Plastic Pipe Shop Ltd

Drawing Name	Metric Socket
Drawing No.	METSOCK/PPF78/ERC78
Drawn by	BB
Last revision	22 August 2019
Sheet	1/1
Manufacturer	VDL/ERA