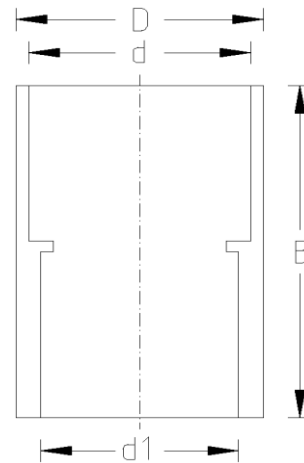


SOCKET (Imperial - Metric)



DATA TABLE

SIZE	B (mm)	D (mm)	d	d1 (mm)	WEIGHT (g)
1/2" : 20mm	35.0	27.0	1/2"	20.0	15
3/4" : 25mm	40.5	32.5	3/4"	25.0	23
1" : 32mm	47.0	41.0	1"	32.0	36
1 1/4" : 40mm	58.0	50.0	1 1/4"	40.0	60
1 1/2" : 50mm	65.0	58.0	1 1/2"	50.0	85
2" : 63mm	79.0	73.0	2"	63.0	145
3" : 90mm	107.0	106.0	3"	90.0	353
4" : 110mm	133.0	132.0	4"	110.0	605
6" : 160mm	188.0	196.0	6"	160.0	1400

SPECS

- WRAS Approved
- Maximum Working Pressure - 15bar
- Operation Temperature 0 - 60°C

Temperature Derating Table

Temperature C	Pressure rating bar
20	15.0
30	12.0
40	8.7
50	5.9
60	3.3

RELATED PRODUCTS

- 51125 - 125ml UNI100 Griffon Cement w.brush
- 51023 - 500ml UNI100 Griffon Cement w. brush
- 51025 - 500ml UNI100 Griffon Cement - Tin
- 51012 - 500ml Tangit Cement - Tin
- 51024 - 500ml WDF-05 Blue Fast Setting Cement
- 51021 - 500ml PVC Cleaner
- 2817 - 50mm roll Emery Cloth
- 40911 - Centre Pull Paper Towel

Plastic Pipe Shop Ltd

Unit 1, Craig Leith Road
Broadleys Business Park,
Stirling, FK7 7XQ
Web: www.plasticpipeshop.co.uk
Email: sales@plasticpipeshop.co.uk
Tel: 01786 472 850

Plastic Pipe Shop Ltd

Drawing Name	Imperial-Metric Socket
Drawing No.	IMPMETSOCK/PPF02
Drawn by	BB
Last revision	24 July 2019
Sheet	1/1
Manufacturer	PLIMAT