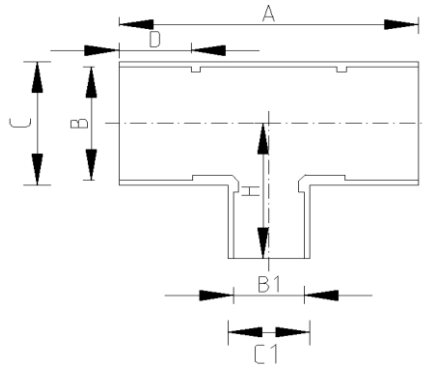


REDUCING TEE (Metric)



DATA TABLE

SIZE	A (mm)	B (mm)	B1 (mm)	C (mm)	C1 (mm)	D (mm)	H (mm)	WEIGHT (g)
40mm x 20mm	82.0	40.0	20.0	47.9	25.0	28.5	41.0	50.0
40mm x 25mm	90.0	40.0	25.0	47.9	30.8	28.5	45.0	50.0
50mm x 20mm	91.0	50.0	20.0	58.3	25.0	33.5	45.5	100.0
50mm x 25mm	98.0	50.0	25.0	58.3	30.8	33.5	49.0	100.0
50mm x 32mm	105.0	50.0	32.0	58.3	38.3	33.5	52.5	100.0
63mm x 25mm	110.0	63.0	25.0	72.9	30.8	40.0	55.0	200.0
63mm x 32mm	118.0	63.0	32.0	72.9	38.3	40.0	59.0	200.0
90mm x 63mm	172.0	90.0	63.0	105.4	72.9	51.0	86.0	600.0
110mm x 63mm	190.2	110.0	63.0	126.4	72.9	61.0	95.1	1000.0
160mm x 110mm	334.0	160.0	110.0	188.0	129.0	86.0	167.0	1000.0

SPECS

- WRAS Approved
- Maximum Working Pressure - 10bar
- Operation Temperature 0 - 60°C

Temperature Derating Table

Temperature C	Pressure rating bar
20	10.0
30	8.0
40	5.8
50	3.9
60	2.2

RELATED PRODUCTS

- 51125 - 125ml UNI100 Griffon Cement w.brush
- 51023 - 500ml UNI100 Griffon Cement w. brush
- 51025 - 500ml UNI100 Griffon Cement - Tin
- 51012 - 500ml Tangit Cement - Tin
- 51024 - 500ml WDF-05 Blue Fast Setting Cement
- 51021 - 500ml PVC Cleaner
- 2817 - 50mm roll Emery Cloth
- 40911 - Centre Pull Paper Towel

Plastic Pipe Shop Ltd

Unit 1, Craig Leith Road
Broadleys Business Park,
Stirling, FK7 7XQ

Web: www.plasticpipeshop.co.uk

Email: sales@plasticpipeshop.co.uk

Tel: 01786 472 850

Plastic Pipe Shop Ltd

Drawing Name	Metric Reducing Tee
Drawing No.	METREDTEE/ERC84/PPF84
Drawn by	BB
Last revision	20 August 2019
Sheet	1/1
Manufacturer	ERA/EFFAST