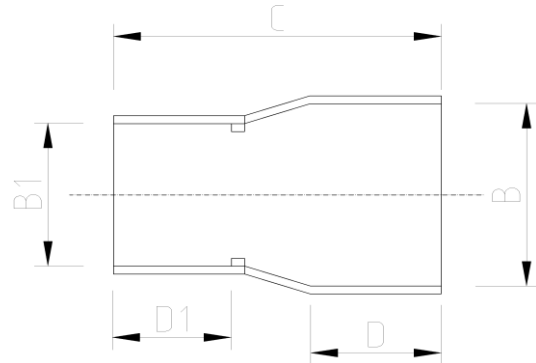


## REDUCING SOCKET (Imperial)



### DATA TABLE

SIZE	B (mm)	B1 (mm)	C (mm)	D (mm)	D1 (mm)	Weight (g)
3/4" : 1/2"	26.67	21.3	53.9	26.0	18.5	50
1" : 3/4"	33.4	26.7	63.9	27.5	25.3	100
1 1/4" : 1"	42.16	33.4	67.4	29.0	27.5	150
1 1/2" : 1 1/4"	48.26	42.2	74.4	34.0	29	200
2" : 1"	60.33	33.4	84.4	40.0	27.5	230
2" : 1 1/2"	60.33	48.3	90.9	40.0	34	230
4" : 3"	114.3	88.9	131.0	63.0	51	400

### SPECS

- WRAS Approved
- Maximum Working Pressure - 15bar
- Operation Temperature 0 - 60°C

### RELATED PRODUCTS

- [51023 - 500ml Griffon Uni-100 PVC Cement](#)
- [51010 - 500ml Tangit Cement](#)
- [51024 - 500ml Griffon WDF-05 Fast Setting PVC Cement](#)
- [51021 - 500ml Griffon Pipe Cleaner](#)
- [2817 - 50mm roll Emery Cloth](#)
- [40911 - Centre Pull Paper Towel](#)

### Temperature Derating Table

Temperature C	Pressure rating bar
20	15.0
30	12.0
40	8.7
50	5.9
60	3.3

## Plastic Pipe Shop Ltd

Unit 1, Craig Leith Road  
Broadleys Business Park,  
Stirling, FK7 7XQ

Web: [www.plasticpipeshop.co.uk](http://www.plasticpipeshop.co.uk)  
Email: [sales@plasticpipeshop.co.uk](mailto:sales@plasticpipeshop.co.uk)  
Tel: 01786 472 850

## Plastic Pipe Shop Ltd

Drawing Name	Imperial Reducing Socket
Drawing No.	IMPREDSOCK/ERC11/PPF11
Drawn by	BB
Last revision	15 August 2019
Sheet	1/1
Manufacturer	ERA/EFFAST