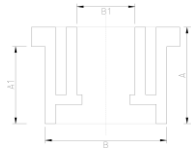




ERC10 Design



ERC10 Design



DATA TABLE

SIZE	A (mm)	A1 (mm)	B (mm)	B1 (mm)	Weight (g)
3/4" : 1/2"	32.6	26.0	26.7	21.3	10
1" : 1/2"	34.1	27.2	33.4	21.3	50
1" : 3/4"	34.1	27.5	33.4	26.7	20
1 1/4" : 1/2"	36	28.7	42.2	21.3	30
1 1/4" : 3/4"	36	28.7	42.2	26.7	30
1 1/4" : 1"	36	28.7	42.2	33.4	30
1 1/2" : 1/2"	40.8	33.5	48.3	21.3	100
1 1/2" : 3/4"	40.8	33.5	48.3	26.7	100
1 1/2" : 1"	40.8	33.4	48.3	33.4	50
1 1/2" : 1 1/4"	41	34.0	48.3	42.2	50
2" : 1/2"	47.4	39.6	60.3	21.3	100
2" : 3/4"	47.4	39.6	60.3	26.7	100
2" : 1"	47.4	39.6	60.3	33.4	100
2" : 1 1/4"	47.4	39.6	60.3	42.2	70
2" : 1 1/2"	47.5	39.6	60.3	48.3	70
3" : 1 1/2"	58	50.0	88.9	48.3	210
3" : 2"	58	50.0	88.9	60.3	210
3" : 2 1/2"	51	44.0	88.9	75.2	210
4" : 2"	54	45.0	114.3	60.3	300
4" : 3"	63	52.0	114.3	88.9	270
6" : 4"	80	69.0	168.3	114.3	680



PPF10 Design



PPF10 Design



SIZE	A (mm)	B (mm)	B1 (mm)	WEIGHT (g)
1/2" : 3/8"	16	21.4	17.1	3.0
2 1/2" : 2"	44	75.2	60.3	80.0
8" : 6"	106	219.1	168.3	1700.0

SPECS

- WRAS Approved
- Maximum Working Pressure - 15bar
- Operation Temperature 0 - 60°C

Temperature Derating Table

Temperature C	Pressure rating bar
20	15.0
30	12.0
40	8.7
50	5.9
60	3.3

RELATED PRODUCTS

- [51023 - 500ml Griffon Uni-100 PVC Cement](#)
- [51010 - 500ml Tangit Cement](#)
- [51024 - 500ml Griffon WDF-05 Fast Setting PVC Cement](#)
- [51021 - 500ml Griffon Pipe Cleaner](#)
- [2817 - 50mm roll Emery Cloth](#)
- [40911 - Centre Pull Paper Towel](#)

Plastic Pipe Shop Ltd

Unit 1, Craig Leith Road
 Broadleys Business Park,
 Stirling, FK7 7XQ
 Web: www.plasticpipeshop.co.uk
 Email: sales@plasticpipeshop.co.uk
 Tel: 01786 472 850

Plastic Pipe Shop Ltd

Drawing Name	Imperial Reducing Bush
Drawing No.	IMPREDBUSH/PPF10/ERC10
Drawn by	BB
Last revision	15 August 2019
Sheet	1/1
Manufacturer	ERA/PLIMAT