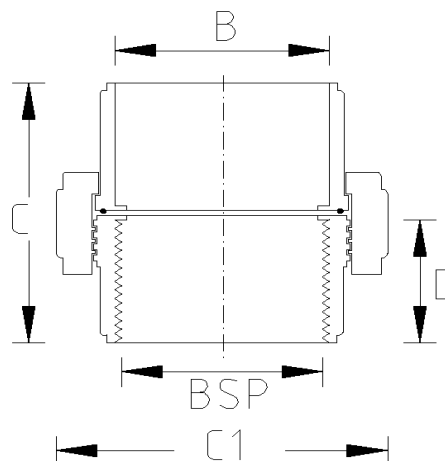


PVC PRESSURE SYSTEMS

PT UNION (Imperial)



DATA TABLE

SIZE	B (mm)	BSP (mm)	C (mm)	C1 (mm)	D (mm)	WEIGHT (g)
1/2"	21.4	21.0	48.8	50.2	19.3	33.0
3/4"	26.7	26.4	54.4	56.5	22.4	62.0
1"	33.4	33.2	63.7	66.9	27.0	79.0
1 1/4"	42.2	41.9	73.5	81.4	29.7	146.0
1 1/2"	48.3	47.8	85.1	87.3	33.3	184.0
2"	60.3	59.6	104.7	107.0	43.6	325.0
2 1/2"	75.2	75.2	110.0	120.0	30.2	625.0
3"	88.9	87.9	125.0	131.9	34.8	753.0
4"	114.3	113.0	145.2	163.0	39.3	1185.0

SPECS

- WRAS Approved
- Maximum Working Pressure - 10bar
- Operation Temperature 0 - 60°C

Temperature Derating Table

Temperature C	Pressure rating bar
20	10.0
30	8.0
40	5.8
50	3.9
60	2.2

RELATED PRODUCTS

- 51125 - 125ml UNI100 Griffon Cement w.brush
- 51023 - 500ml UNI100 Griffon Cement w. brush
- 51025 - 500ml UNI100 Griffon Cement - Tin
- 51012 - 500ml Tangit Cement - Tin
- 51024 - 500ml WDF-05 Blue Fast Setting Cement
- 51021 - 500ml PVC Cleaner
- 2817 - 50mm roll Emery Cloth
- 40911 - Centre Pull Paper Towel

Plastic Pipe Shop Ltd

Unit 1, Craig Leith Road
 Broadleys Business Park,
 Stirling, FK7 7XQ
 Web: www.plasticpipeshop.co.uk
 Email: sales@plasticpipeshop.co.uk
 Tel: 01786 472 850

Plastic Pipe Shop Ltd

Drawing Name	Imperial PT Union
Drawing No.	IMPPTUN/ERC34/PPF34
Drawn by	BB
Last revision	18 September 2024
Sheet	1/1
Manufacturer	PLIMAT/EFFAST