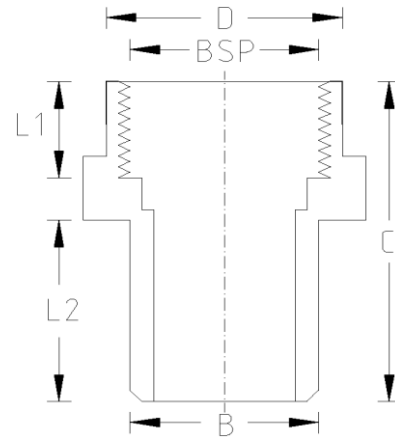


PT SPIGOT ADAPTOR (Imperial)



DATA TABLE

SIZE	B (mm)	BSP	C (mm)	D (mm)	L1 (mm)	L2 (mm)	WEIGHT (g)
1/2"	21.4	1/2"	39.0	28.0	15.0	16.0	20.0
3/4"	26.7	3/4"	43.3	34.0	16.3	19.0	35.0
1"	33.2	1"	49.1	42.0	19.1	22.0	60.0
1 1/4"	42.2	1 1/4"	57.4	51.0	21.4	26.0	90.0
1 1/2"	48.3	1 1/2"	62.0	58.0	21.0	32.0	155.0
2"	60.3	2"	70.0	72.0	26.0	39.0	265.0

SPECS

- WRAS Approved
- Maximum Working Pressure - 15bar
- Operation Temperature 0 - 60°C

RELATED PRODUCTS

- 51125 - 125ml UNI100 Griffon Cement w.brush
- 51023 - 500ml UNI100 Griffon Cement w. brush
- 51025 - 500ml UNI100 Griffon Cement - Tin
- 51012 - 500ml Tangit Cement - Tin
- 51024 - 500ml WDF-05 Blue Fast Setting Cement
- 51021 - 500ml PVC Cleaner
- 2817 - 50mm roll Emery Cloth
- 40911 - Centre Pull Paper Towel

Temperature Derating Table

Temperature C	Pressure rating bar
20	15.0
30	12.0
40	8.7
50	5.9
60	3.3

Plastic Pipe Shop Ltd

Unit 1, Craig Leith Road
Broadleys Business Park,
Stirling, FK7 7XQ
Web: www.plasticpipeshop.co.uk
Email: sales@plasticpipeshop.co.uk
Tel: 01786 472 850

Plastic Pipe Shop Ltd

Drawing Name	Imperial PT Reinforced Spigot Adaptor
Drawing No.	IMPPTRFCDSPIGADAP/PPF32
Drawn by	BB
Last revision	19 August 2019
Sheet	1/1
Manufacturer	EFFAST