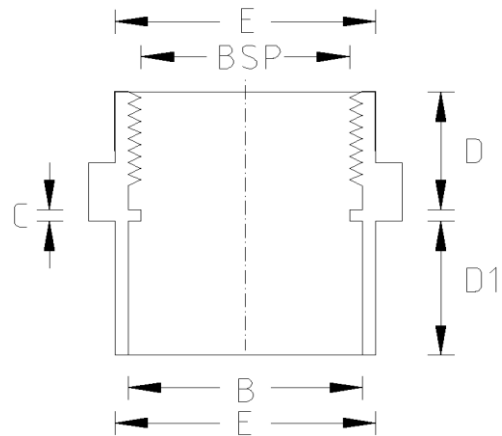


PT REINFORCED SOCKET (Imperial)



DATA TABLE

SIZE	B (mm)	BSP	C (mm)	D (mm)	D1 (mm)	E (mm)	WEIGHT (g)
1/2"	21.3	1/2"	4.0	15.0	16.0	28.0	20
3/4"	26.7	3/4"	6.0	16.3	19.0	34.0	35
1"	33.4	1"	6.0	19.1	22.0	42.0	60
1 1/4"	42.2	1 1/4"	8.0	21.4	27.0	50.5	90
1 1/2"	48.3	1 1/2"	13.0	23.6	32.0	61.0	155
2"	60.3	2"	15.0	25.7	39.0	75.0	265

SPECS

- WRAS Approved
- Maximum Working Pressure - 15bar
- Operation Temperature 0 - 60°C

Temperature Derating Table

Temperature C	Pressure rating bar
20	15.0
30	12.0
40	8.7
50	5.9
60	3.3

RELATED PRODUCTS

- 51125 - 125ml UNI100 Griffon Cement w.brush
- 51023 - 500ml UNI100 Griffon Cement w. brush
- 51025 - 500ml UNI100 Griffon Cement - Tin
- 51012 - 500ml Tangit Cement - Tin
- 51024 - 500ml WDF-05 Blue Fast Setting Cement
- 51021 - 500ml PVC Cleaner
- 2817 - 50mm roll Emery Cloth
- 40911 - Centre Pull Paper Towel

Plastic Pipe Shop Ltd

Unit 1, Craig Leith Road
Broadleys Business Park,
Stirling, FK7 7XQ
Web: www.plasticpipeshop.co.uk
Email: sales@plasticpipeshop.co.uk
Tel: 01786 472 850

Plastic Pipe Shop Ltd

Drawing Name	Imperial Reinforced Socket
Drawing No.	IMPRFCDSOCK/PPF26
Drawn by	BB
Last revision	24 July 2019
Sheet	1/1
Manufacturer	EFFAST