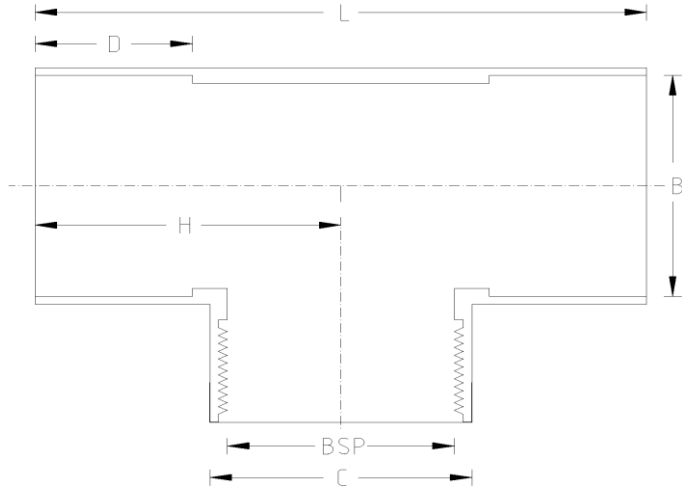


PVC PRESSURE SYSTEMS

PT REINFORCED TEE (Imperial)



DATA TABLE

SIZE	B (mm)	BSP	C (mm)	D (mm)	H (mm)	L (mm)	WEIGHT (g)
1/2"	21.4	21	28.0	17.0	27.0	56.0	26.0
3/4"	26.7	26.4	34.0	19.0	33.0	66.0	41.0
1"	33.4	33.2	42.0	23.0	39.0	80.0	78.0
1 1/4"	42.2	41.9	51.0	27.0	48.0	96.0	119.0
1 1/2"	48.3	47.8	61.0	32.0	55.6	116.0	227.0
2"	60.3	59.6	75.0	39.0	72.0	144.0	392.0

SPECS

- WRAS Approved
- Maximum Working Pressure - 15bar
- Operation Temperature 0 - 60°C

RELATED PRODUCTS

- 51125 - 125ml UNI100 Griffon Cement w.brush
- 51023 - 500ml UNI100 Griffon Cement w. brush
- 51025 - 500ml UNI100 Griffon Cement - Tin
- 51012 - 500ml Tangit Cement - Tin
- 51024 - 500ml WDF-05 Blue Fast Setting Cement
- 51021 - 500ml PVC Cleaner
- 2817 - 50mm roll Emery Cloth
- 40911 - Centre Pull Paper Towel

Temperature Derating Table

Temperature C	Pressure rating bar
20	15.0
30	12.0
40	8.7
50	5.9
60	3.3

Plastic Pipe Shop Ltd

Unit 1, Craig Leith Road
 Broadleys Business Park,
 Stirling, FK7 7XQ
 Web: www.plasticpipeshop.co.uk
 Email: sales@plasticpipeshop.co.uk
 Tel: 01786 472 850

Plastic Pipe Shop Ltd

Drawing Name	Imperial Reinforced Tee
Drawing No.	IMPRFCDTEE/PPF30
Drawn by	BB
Last revision	05 September 2023
Sheet	1/1
Manufacturer	EFFAST