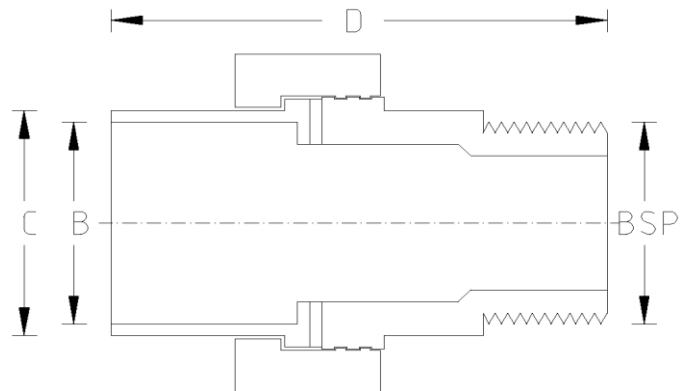
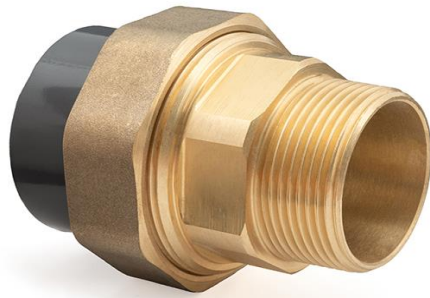


## PT MBSP BRASS COMPOSITE UNION (Imperial)



### DATA TABLE

SIZE	B (mm)	BSP	C (mm)	D (mm)	WEIGHT (g)
1/2"	21.4	1/2"	27.5	57.5	49.0
3/4"	26.7	3/4"	36.0	68.5	95.0
1"	33.6	1"	41.5	71.5	135.0
1 1/4"	42.2	1 1/4"	53.0	85.5	160.0
1 1/2"	48.3	1 1/2"	59.0	91.5	100.0
2"	60.3	2"	74.0	109.0	200.0
2 1/2"	75.2	2 1/2"	92.5	126.5	350.0
3"	88.9	3"	105.0	138.5	550.0

### SPECS

- WRAS Approved
- Maximum Working Pressure - 10bar
- Operation Temperature 0 - 60°C

### Temperature Derating Table

Temperature C	Pressure rating bar
20	10.0
30	8.0
40	5.8
50	3.9
60	2.2

### RELATED PRODUCTS

- 13293 - PTFE tape
- 51125 - 125ml UNI100 Griffon Cement w.brush
- 51023 - 500ml UNI100 Griffon Cement w. brush
- 51025 - 500ml UNI100 Griffon Cement - Tin
- 51012 - 500ml Tangit Cement - Tin
- 51024 - 500ml WDF-05 Blue Fast Setting Cement
- 51021 - 500ml PVC Cleaner
- 2817 - 50mm roll Emery Cloth
- 40911 - Centre Pull Paper Towel

## Plastic Pipe Shop Ltd

Unit 1, Craig Leith Road,  
Broadleys Business Park,  
Stirling, FK7 7LQ  
Web: [www.plasticpipeshop.co.uk](http://www.plasticpipeshop.co.uk)  
Email: [sales@plasticpipeshop.co.uk](mailto:sales@plasticpipeshop.co.uk)  
Tel: 01786 472 850

## Plastic Pipe Shop Ltd

Drawing Name	Imperial MBSP Brass Composite Union
Drawing No.	IMPPTMBSPBRUN/PPF49b
Drawn by	BB
Last revision	24 July 2019
Sheet	1/1
Manufacturer	EFFAST