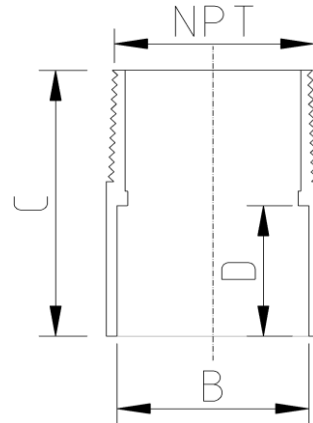


NPT PT ADAPTOR (Imperial)



DATA TABLE

SIZE	B (mm)	C (mm)	D (mm)	NPT	WEIGHT (g)
1/2"	21.3	40.8	19.7	1/2"	11.5
3/4"	26.7	43.3	20.0	3/4"	17.5
1"	33.4	55.0	29.0	1"	31
1 1/4"	42.2	59.9	29.5	1 1/4"	49
1 1/2"	48.3	65.6	34.0	1 1/2"	65.5
2"	60.3	72.6	40.9	2"	91.5

SPECS

- WRAS Approved
- Maximum Working Pressure - 10bar
- Operation Temperature 0 - 60°C

Temperature Derating Table

Temperature C	Pressure rating bar
20	10.0
30	8.0
40	5.8
50	3.9
60	2.2

RELATED PRODUCTS

- [51023 - 500ml Griffon Uni-100 PVC Cement](#)
- [51010 - 500ml Tangit Cement](#)
- [51024 - 500ml Griffon WDF-05 Fast Setting PVC Cement](#)
- [51021 - 500ml Griffon Pipe Cleaner](#)
- [2817 - 50mm roll Emery Cloth](#)
- [40911 - Centre Pull Paper Towel](#)
- [13293 - PTFE Tape](#)

Plastic Pipe Shop Ltd

Unit 1, Craig Leith Road
Broadleys Business Park,
Stirling, FK7 7XQ
Web: www.plasticpipeshop.co.uk
Email: sales@plasticpipeshop.co.uk
Tel: 01786 472 850

Plastic Pipe Shop Ltd

Drawing Name	Imperial NPT PT Adaptor
Drawing No.	IMPNTPTADAP/PPF41
Drawn by	BB
Last revision	14 February 2019
Sheet	1/1
Manufacturer	ERA