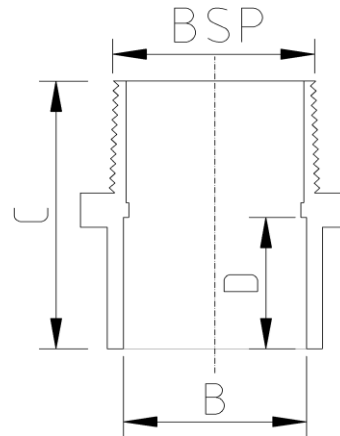


MBSP SOCKET ADAPTOR (Metric)



DATA TABLE

SIZE	B (mm)	BSP (mm)	C (mm)	D (mm)	WEIGHT (g)
12mm x 1/4"	12	11.4	32.0	12.0	100
12mm x 3/8"	12	14.9	36.2	13.8	100
20mm x 3/8"	20	14.9	43.0	19.1	100
20mm x 1/2"	20	21.0	38.5	16.5	140
25mm x 3/4"	25	26.4	44.0	19.5	240
32mm x 1"	32	33.2	52.5	22.5	340
40mm x 1 1/4"	40	41.9	58.0	26.5	540
50mm x 1 1/2"	50	47.8	64.0	31.5	820
63mm x 2"	63	59.6	74.0	38.5	1320
75mm x 2 1/2"	75	75.2	84.0	38.0	1000
90mm x 3"	90	87.9	98.5	51.5	1000
110mm x 4"	110	113.0	116.5	61.5	1000

SPECS

- WRAS Approved
- Maximum Working Pressure - 10bar
- Operation Temperature 0 - 60°C

Temperature Derating Table

Temperature C	Pressure rating bar
20	10.0
30	8.0
40	5.8
50	3.9
60	2.2

RELATED PRODUCTS

- 51125 - 125ml UNI100 Griffon Cement w.brush
- 51023 - 500ml UNI100 Griffon Cement w. brush
- 51025 - 500ml UNI100 Griffon Cement - Tin
- 51012 - 500ml Tangit Cement - Tin
- 51024 - 500ml WDF-05 Blue Fast Setting Cement
- 51021 - 500ml PVC Cleaner
- 2817 - 50mm roll Emery Cloth
- 40911 - Centre Pull Paper Towel

Plastic Pipe Shop Ltd

Unit 1, Craig Leith Road
Broadleys Business Park,
Stirling, FK7 7XQ
Web: www.plasticpipeshop.co.uk
Email: sales@plasticpipeshop.co.uk
Tel: 01786 472 850

Plastic Pipe Shop Ltd

Drawing Name	Metric MBSP Socket Adaptor
Drawing No.	METMBSPSOCKADAP/ERC105
Drawn by	BB
Last revision	30 March 2023
Sheet	1/1
Manufacturer	ERA