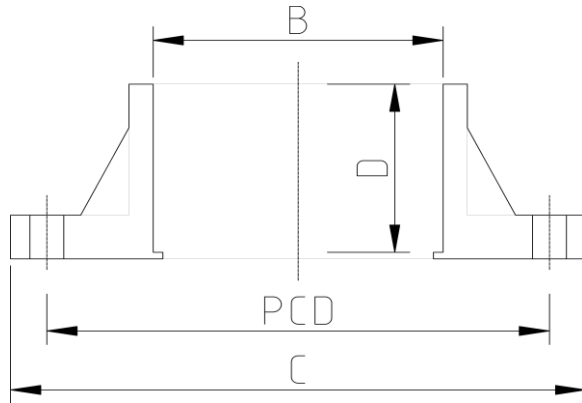


FULL FACE FLANGE PN10/16 (Metric)



DATA TABLE

SIZE	B (mm)	C (mm)	D (mm)	PCD (mm)	HOLES	WEIGHT (g)
20mm	20.0	89.0	22.0	65.0	4	78
25mm	25.0	98.0	23.5	75.0	4	105
32mm	32.0	108.0	25.0	85.0	4	143
40mm	40.0	118.0	32.0	100.0	4	220
50mm	50.0	127.0	32.5	110.0	4	280
63mm	63.0	151.5	35.8	125.0	4	380
75mm	75.0	177.3	41.0	145.0	4	505
90mm	90.0	191.0	48.5	160.0	8	685
110mm	110.0	228.5	58.5	180.0	8	940
160mm	160.0	285.0	81.0	240.0	8	2300
200mm	200.0	315.0	99.0	295.0	8	3093
225mm	225.0	340.0	112.0	295.0	8	3093
250mm	250.0	370.0	122.0	325.0	12	3093

SPECS

- WRAS Approved
- Maximum Working Pressure - 16bar
- Operation Temperature 0 - 60°C

Temperature Derating Table

Temperature C	Pressure rating bar
20	16.0
30	12.8
40	9.3
50	6.2
60	3.5

RELATED PRODUCTS

- [51023 - 500ml Griffon Uni-100 PVC Cement](#)
- [51010 - 500ml Tangit Cement](#)
- [51024 - 500ml Griffon WDF-05 Fast Setting PVC Cement](#)
- [51021 - 500ml Griffon Pipe Cleaner](#)
- [2817 - 50mm roll Emery Cloth](#)
- [40911 - Centre Pull Paper Towel](#)

Plastic Pipe Shop Ltd

Unit 1, Craig Leith Road,
Broadleys Business Park,
Stirling, FK7 7LQ
Web: www.plasticpipeshop.co.uk
Email: sales@plasticpipeshop.co.uk
Tel: 01786 472 850

Plastic Pipe Shop Ltd

Drawing Name	Metric Full Face Flange PN10
Drawing No.	METFFFN10/ERC89/PPF89
Drawn by	BB
Last revision	20 August 2019
Sheet	1/1
Manufacturer	ERA/VDL