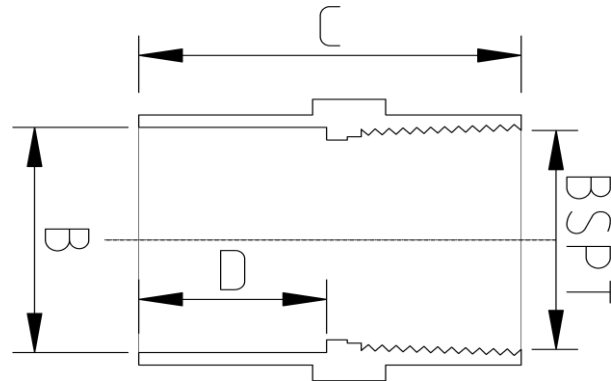


## FBSP TAPERED ADAPTOR (Metric)



### DATA TABLE

SIZE	B (mm)	BSPT (mm)	C (mm)	D (mm)	WEIGHT (g)
20mm x 1/2"	20.0	21.0	35.5	16.5	180
25mm x 3/4"	25.0	26.4	40.0	19.5	250
32mm x 1"	32.0	33.2	46.6	22.5	380
40mm x 1 1/4"	40.0	41.9	54.5	26.5	600
50mm x 1 1/2"	50.0	47.8	59.5	31.5	950
63mm x 2"	63.0	59.6	71.5	38.5	1650
75mm x 2 1/2"	75.0	75.2	80.5	44.5	1900
90mm x 3"	90.0	87.9	90.5	51.5	2300
110mm x 4"	110.0	113.0	107.0	61.5	3600

### SPECS

- WRAS Approved
- Maximum Working Pressure - 10bar
- Operation Temperature 0 - 60°C

### Temperature Derating Table

Temperature C	Pressure rating bar
20	10.0
30	8.0
40	5.8
50	3.9
60	2.2

### RELATED PRODUCTS

- 51125 - 125ml UNI100 Griffon Cement w.brush
- 51023 - 500ml UNI100 Griffon Cement w. brush
- 51025 - 500ml UNI100 Griffon Cement - Tin
- 51012 - 500ml Tangit Cement - Tin
- 51024 - 500ml WDF-05 Blue Fast Setting Cement
- 51021 - 500ml PVC Cleaner
- 2817 - 50mm roll Emery Cloth
- 40911 - Centre Pull Paper Towel

## Plastic Pipe Shop Ltd

Unit 1, Craig Leith Road  
Broadleys Business Park,  
Stirling, FK7 7XQ  
Web: [www.plasticpipeshop.co.uk](http://www.plasticpipeshop.co.uk)  
Email: [sales@plasticpipeshop.co.uk](mailto:sales@plasticpipeshop.co.uk)  
Tel: 01786 472 850

## Plastic Pipe Shop Ltd

Drawing Name	Metric FBSP Tapered Adaptor
Drawing No.	METFBSPTAPADAP/ERC96
Drawn by	BB
Last revision	30 March 2023
Sheet	1/1
Manufacturer	ERA