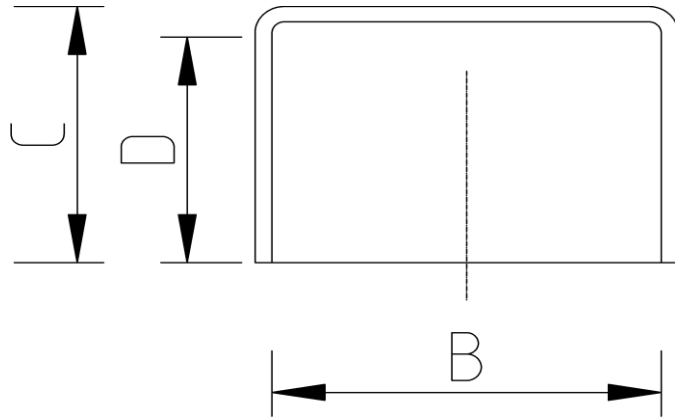


END CAP (Imperial)



DATA TABLE

SIZE	B (mm)	D (mm)	C (mm)	WEIGHT (g)
1 1/2"	48.3	34.0	38.6	47.5
2"	60.3	40.5	44.5	61.5

SPECS

- WRAS Approved
- Maximum Working Pressure - 10bar
- Operating Temperature 0 - 60°C

RELATED PRODUCTS

- [51023 - 500ml Griffon Uni-100 PVC Cement](#)
- [51010 - 500ml Tangit Cement](#)
- [51024 - 500ml Griffon WDF-05 Fast Setting PVC Cement](#)
- [51021 - 500ml Griffon Pipe Cleaner](#)
- [2817 - 50mm roll Emery Cloth](#)
- [40911 - Centre Pull Paper Towel](#)

Temperature Derating Table

Temperature C	Pressure rating bar
20	10.0
30	8.0
40	5.8
50	3.9
60	2.2

Plastic Pipe Shop Ltd

Unit 10, 9 Munro Road,
Stirling, FK7 7XQ
Web: www.plasticpipeshop.co.uk
Email: sales@plasticpipeshop.co.uk
Tel: 01786 472 850

Plastic Pipe Shop Ltd

Drawing Name	Imperial End Cap PVC
Drawing No.	IMPWHENC/PPF156
Drawn by	BB
Last revision	27 March 2019
Sheet	1/1
Manufacturer	ERA