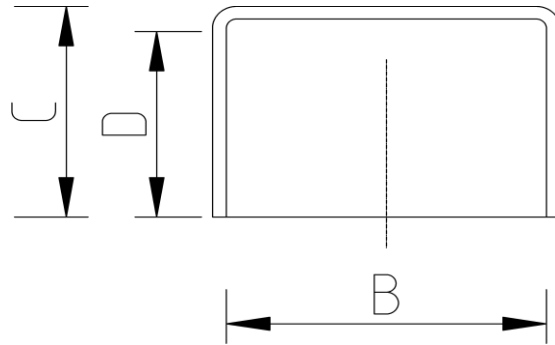


## END CAP (Imperial)



### DATA TABLE

SIZE	B (mm)	D (mm)	C (mm)	Weight (g)
3/8"	17.1	14.0	26.0	7
1/2"	21.4	19.0	22.0	8
3/4"	26.7	26.0	30.0	16
1"	33.6	27.5	30.9	21
1 1/4"	42.2	29.6	33.4	31.5
1 1/2"	48.3	34.0	38.6	47.5
2"	60.3	40.5	44.5	61.5
2 1/2"	75.2	46.0	53.6	153
3"	88.9	49.5	57.2	191.5
4"	114.3	54.0	61.6	302
6"	168.3	80.0	89.0	751
8"	219.1	119.0	165.0	2978

### SPECS

- WRAS Approved
- Maximum Working Pressure - 15bar
- Operating Temperature 0 - 60°C

### RELATED PRODUCTS

- [51023 - 500ml Griffon Uni-100 PVC Cement](#)
- [51010 - 500ml Tangit Cement](#)
- [51024 - 500ml Griffon WDF-05 Fast Setting PVC Cement](#)
- [51021 - 500ml Griffon Pipe Cleaner](#)
- [2817 - 50mm roll Emery Cloth](#)
- [40911 - Centre Pull Paper Towel](#)

### Temperature Derating Table

Temperature C	Pressure rating bar
20	15.0
30	12.0
40	8.7
50	5.9
60	3.3

## Plastic Pipe Shop Ltd

Unit 10, 9 Munro Road,  
Stirling, FK7 7XQ  
Web: [www.plasticpipeshop.co.uk](http://www.plasticpipeshop.co.uk)  
Email: [sales@plasticpipeshop.co.uk](mailto:sales@plasticpipeshop.co.uk)  
Tel: 01786 472 850

## Plastic Pipe Shop Ltd

Drawing Name	Imperial End Cap PVC
Drawing No.	IMPENDCAP/PPF12/ERC12
Drawn by	BB
Last revision	15 August 2019
Sheet	1/1
Manufacturer	ERA