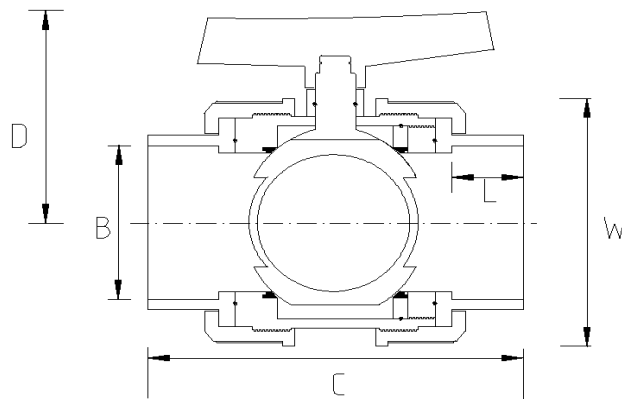


## EFFAST DOUBLE UNION BALL VALVE (Imperial)



### DATA TABLE

SIZE	B (mm)	C (mm)	D (mm)	L (mm)	W (mm)	WEIGHT (g)
3/8"	17.1	78.0	51.0	16.0	50.0	140.0
1/2"	21.3	78.0	51.0	16.0	50.0	140.0
3/4"	26.7	90.0	58.0	19.0	60.0	200.0
1"	33.4	104.0	65.0	22.0	68.0	300.0
1 1/4"	42.2	116.0	76.0	26.0	80.0	450.0
1 1/2"	48.3	126.0	88.0	31.0	94.0	690.0
2"	60.3	149.0	104.0	38.0	115.0	1150.0
2 1/2"	75.0	205.0	137.0	44.0	168.0	3100.0
3"	88.9	212.0	138.0	51.0	168.0	3250.0
4"	114.3	244.0	166.0	61.0	210.0	5500.0

### SPECS

- WRAS Approved
- Maximum Working Pressure:
  - 16bar (3/8" - 2")
  - 10bar (2 1/2" - 4")
- Operation Temperature 0 - 60°C

### RELATED PRODUCTS

- 51125 - 125ml UNI100 Griffon Cement w.brush
- 51023 - 500ml UNI100 Griffon Cement w. brush
- 51025 - 500ml UNI100 Griffon Cement - Tin
- 51012 - 500ml Tangit Cement - Tin
- 51024 - 500ml WDF-05 Blue Fast Setting Cement
- 51021 - 500ml PVC Cleaner
- 2817 - 50mm roll Emery Cloth
- 40911 - Centre Pull Paper Towel

Temperature Derating Table (16bar)

Temperature C	Pressure rating bar
20	16.0
30	12.8
40	9.3
50	6.2
60	3.5

Temperature Derating Table (10bar)

Temperature C	Pressure rating bar
20	10.0
30	8.0
40	5.8
50	3.9
60	2.2

## Plastic Pipe Shop Ltd

Unit 1, Craig Leith Road  
Broadleys Business Park,  
Stirling, FK7 7XQ  
Web: [www.plasticpipeshop.co.uk](http://www.plasticpipeshop.co.uk)  
Email: [sales@plasticpipeshop.co.uk](mailto:sales@plasticpipeshop.co.uk)  
Tel: 01786 472 850

## Plastic Pipe Shop Ltd

Drawing Name	Imperial Effast Double Union Ball Valve
Drawing No.	IMPEFFDUBV/PPF56e
Drawn by	BB
Last revision	10 September 2019
Sheet	1/1
Manufacturer	EFFAST