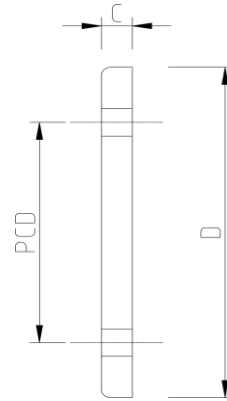


BLANK FLANGE PN10/16 (Metric)



DATA TABLE

SIZE	C (mm)	D (mm)	PCD (mm)	HOLES	WEIGHT (g)
20mm	11	95	65	4	76
25mm	12	105	75	4	104
32mm	14	115	85	4	140
40mm	16	150	100	4	220
50mm	16	150	110	4	280
63mm	13	165	125	4	370
75mm	19	185	145	4	495
90mm	19	197	160	8	655
110mm	19	214	180	8	850
125mm	24	226	190	8	950
140mm	26	248	210	8	1165
160mm	28	285	240	8	1610
200mm	30	340	295	8	2480

SPECS

- WRAS Approved
- Maximum Working Pressure - 16bar
- Operation Temperature 0 - 60°C

RELATED PRODUCTS

- [51023 - 500ml Griffon Uni-100 PVC Cement](#)
- [51010 - 500ml Tangit Cement](#)
- [51024 - 500ml Griffon WDF-05 Fast Setting PVC Cement](#)
- [51021 - 500ml Griffon Pipe Cleaner](#)
- [2817 - 50mm roll Emery Cloth](#)
- [40911 - Centre Pull Paper Towel](#)

Temperature Derating Table

Temperature C	Pressure rating bar
20	16.0
30	12.8
40	9.3
50	6.2
60	3.5

Plastic Pipe Shop Ltd

Unit 1, Craig Leith Road,
Broadleys Business Park,
Stirling, FK7 7LQ
Web: www.plasticpipeshop.co.uk
Email: sales@plasticpipeshop.co.uk
Tel: 01786 472 850

Plastic Pipe Shop Ltd

Drawing Name	Metric Blank Flange PN10/16
Drawing No.	METBLAFLA/PPF90
Drawn by	BB
Last revision	20 August 2019
Sheet	1/1
Manufacturer	EFFAST/DURAPIPE/PLIMAT