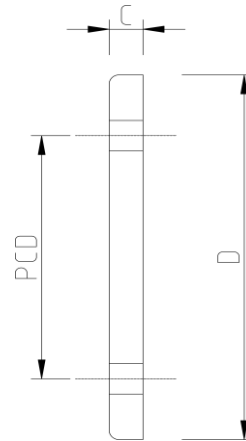


BLANK FLANGE PN10.16 (Imperial)



DATA TABLE

SIZE	C (mm)	D (mm)	PCD (mm)	No. Holes	Recommended Bolt Size	HOLES	Weight (g)
1/2"	11.0	95.0	65.0	4	M12	4	76
3/4"	12.0	105.0	75.0	4	M12	4	104
1"	14.0	115.0	85.0	4	M12	4	140
1 1/4"	15.0	142.0	100.0	4	M16	4	220
1 1/2"	16.0	150.0	110.0	4	M16	4	280
2"	13.0	165.0	125.0	4	M16	4	370
2 1/2"	19.0	185.0	145.0	4	M16	4	495
3"	19.0	197.0	160.0	8	M16	8	655
4"	19.0	214.0	180.0	8	M16	8	850
6"	26.0	286.0	240.0	8	M20	8	1610
8" PN10	30.0	340.0	395.0	8	M20	8	2480

SPECS

- WRAS Approved
- Maximum Working Pressure 16bar
- Operating Temperature 0 - 60°C

RELATED PRODUCTS

- [Bolt Sets](#)
- [Full Face Gaskets](#)
- [Stub Gaskets](#)

Temperature Derating Table

Temperature C	Pressure rating bar
20	16.0
30	12.8
40	9.3
50	6.2
60	3.5

Plastic Pipe Shop Ltd

Unit 1, Craig Leith Road
Broadleys Business Park,
Stirling, FK7 7XQ
Web: www.plasticpipeshop.co.uk
Email: sales@plasticpipeshop.co.uk
Tel: 01786 472 850

Plastic Pipe Shop Ltd

Drawing Name	Imperial Blank Flange PN10/16 PVC
Drawing No.	IMPBFPN1016/PPF18
Drawn by	BB
Last revision	15 August 2019
Sheet	1/1
Manufacturer	DURAPIPE