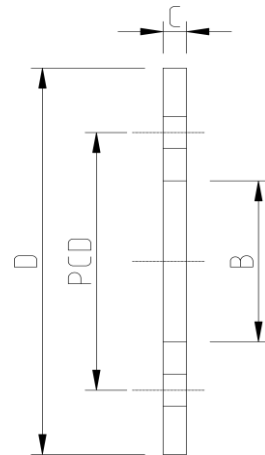


BACKING RING (Metric)



DATA TABLE

SIZE	B (mm)	C (mm)	D (mm)	PCD (mm)	HOLES	WEIGHT (g)
20mm	29.0	11.0	95.0	65.0	4	125.0
25mm	36.0	12.0	105.0	75.0	4	131.0
32mm	43.0	14.0	115.0	85.0	4	144.0
40mm	52.0	16.0	140.0	100.0	4	181.0
50mm	62.0	16.0	150.0	110.0	4	181.0
63mm	77.0	18.0	165.0	125.0	4	231.0
75mm	90.0	19.0	185.0	145.0	4	369.0
90mm	111.0	20.0	200.0	160.0	4	925.0
110mm	133.0	22.0	220.0	180.0	8	663.0
125mm	147.0	24.0	226.0	190.0	8	750.0
140mm	166.0	26.0	248.0	210.0	8	1313.0
160mm	191.0	28.0	285.0	240.0	8	2188.0
200mm	230.0	30.0	340.0	286.0	8	2500.0

SPECS

- WRAS Approved
- Maximum Working Pressure - 10bar
- Operation Temperature 0 - 60°C

Temperature Derating Table

Temperature C	Pressure rating bar
20	10.0
30	8.0
40	5.8
50	3.9
60	2.2

RELATED PRODUCTS

- 51125 - 125ml UNI100 Griffon Cement w.brush
- 51023 - 500ml UNI100 Griffon Cement w. brush
- 51025 - 500ml UNI100 Griffon Cement - Tin
- 51012 - 500ml Tangit Cement - Tin
- 51024 - 500ml WDF-05 Blue Fast Setting Cement
- 51021 - 500ml PVC Cleaner
- 2817 - 50mm roll Emery Cloth
- 40911 - Centre Pull Paper Towel

Plastic Pipe Shop Ltd

Unit 1, Craig Leith Road
Broadleys Business Park,
Stirling, FK7 7XQ
Web: www.plasticpipeshop.co.uk
Email: sales@plasticpipeshop.co.uk
Tel: 01786 472 850

Plastic Pipe Shop Ltd

Drawing Name	Metric Backing Ring
Drawing No.	METBACKRING/PPF95/ERC95
Drawn by	BB
Last revision	18 August 2020
Sheet	1/1
Manufacturer	PLIMAT