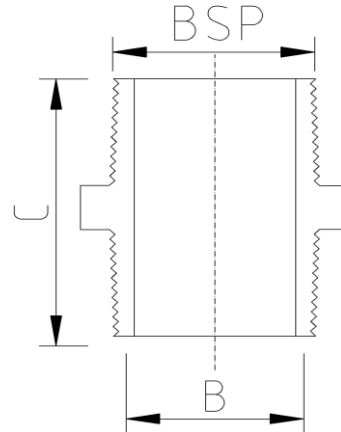


BSP HEX NIPPLE (Imperial)



DATA TABLE

SIZE	B (mm)	BSP	C (mm)	WEIGHT (g)
1/4"	7.1	1/4"	32.0	10
3/8"	10.6	3/8"	38.0	15
1/2"	13.4	1/2"	41.0	15
3/4"	18.4	3/4"	45.0	26
1"	25.2	1"	54.2	42
1 1/4"	31.5	1 1/4"	54.0	56
1 1/2"	36.5	1 1/2"	56.0	71
2"	47.5	2"	60.5	90
2 1/2"	64.0	2 1/2"	76.0	100
3"	74.6	3"	83.0	150
4"	98.8	4"	96.0	210

SPECS

- WRAS Approved
- Maximum Working Pressure - 10bar
- Operation Temperature 0 - 60°C

RELATED PRODUCTS

- [51023 - 500ml Griffon Uni-100 PVC Cement](#)
- [51010 - 500ml Tangit Cement](#)
- [51024 - 500ml Griffon WDF-05 Fast Setting PVC Cement](#)
- [51021 - 500ml Griffon Pipe Cleaner](#)
- [2817 - 50mm roll Emery Cloth](#)
- [40911 - Centre Pull Paper Towel](#)

Temperature Derating Table

Temperature C	Pressure rating bar
20	10.0
30	8.0
40	5.8
50	3.9
60	2.2

Plastic Pipe Shop Ltd

Unit 1, Craig Leith Road
Broadleys Business Park,
Stirling, FK7 7XQ
Web: www.plasticpipeshop.co.uk
Email: sales@plasticpipeshop.co.uk
Tel: 01786 472 850

Plastic Pipe Shop Ltd

Drawing Name	Imperial BSP Hex Nipple
Drawing No.	IMPBSPHEXNIP/PPF52/PPF53
Drawn by	BB
Last revision	19 August 2019
Sheet	1/1
Manufacturer	ERA/VDL/PLIMAT