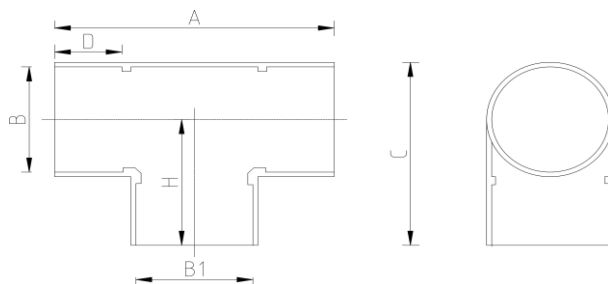


## 90° TEE (Metric)



### DATA TABLE

SIZE	A (mm)	B (mm)	B1 (mm)	C (mm)	D (mm)	H (mm)	WEIGHT (g)
12mm	38.0	12.0	12.0	27.0	12.0	19.0	10
16mm	46.0	16.0	16.0	33.5	14.0	23.0	25
20mm	57.0	20.0	20.0	37.0	17.0	27.0	25
25mm	67.0	25.0	25.0	45.5	19.5	33.0	44
32mm	81.0	32.0	32.0	55.0	23.0	39.0	75
40mm	102.0	40.0	40.0	67.0	28.5	47.0	120
50mm	123.0	50.0	50.0	82.0	33.5	57.0	172
63mm	148.0	63.0	63.0	103.5	40.0	72.0	300
75mm	166.0	75.0	75.0	119.5	44.0	82.0	495
90mm	196.0	90.0	90.0	142.0	51.0	97.0	790
110mm	236.4	110.0	110.0	173.0	61.0	118.0	1330
125mm	268.0	125.0	125.0	197.5	69.0	135.0	1330
140mm	298.0	140.0	140.0	219.0	76.5	149.0	1330
160mm	338.0	160.0	160.0	247.0	86.0	167.0	4100
200mm	434.0	200.0	200.0	309.0	107.0	209.0	7200
225mm	468.0	225.0	225.0	345.5	119.0	233.0	8600
250mm	518.0	250.0	250.0	383.0	131.0	258.0	10000
315mm	664.0	315.0	315.0	510.0	165.0	332.0	15000

### SPECS

- WRAS Approved
- Maximum Working Pressure - 10bar
- Operation Temperature 0 - 60°C

### Temperature Derating Table

Temperature C	Pressure rating bar
20	10.0
30	8.0
40	5.8
50	3.9
60	2.2

### RELATED PRODUCTS

- [51023 - 500ml Griffon Uni-100 PVC Cement](#)
- [51010 - 500ml Tangit Cement](#)
- [51024 - 500ml Griffon WDF-05 Fast Setting PVC Cement](#)
- [51021 - 500ml Griffon Pipe Cleaner](#)
- [2817 - 50mm roll Emery Cloth](#)
- [40911 - Centre Pull Paper Towel](#)

## Plastic Pipe Shop Ltd

Unit 1, Craig Leith Road,  
Broadleys Business Park,  
Stirling, FK7 7LQ  
Web: [www.plasticpipeshop.co.uk](http://www.plasticpipeshop.co.uk)  
Email: [sales@plasticpipeshop.co.uk](mailto:sales@plasticpipeshop.co.uk)  
Tel: 01786 472 850

## Plastic Pipe Shop Ltd

Drawing Name	Metric 90 Tee
Drawing No.	MET90TEE/PPF8A/ERC8A
Drawn by	BB
Last revision	20 August 2019
Sheet	1/1
Manufacturer	ERA/PLIMAT